

GEOSS AP Symposium

January 11-12, 2007

Dai-ichi Hotel, Tokyo

Capacity Needs

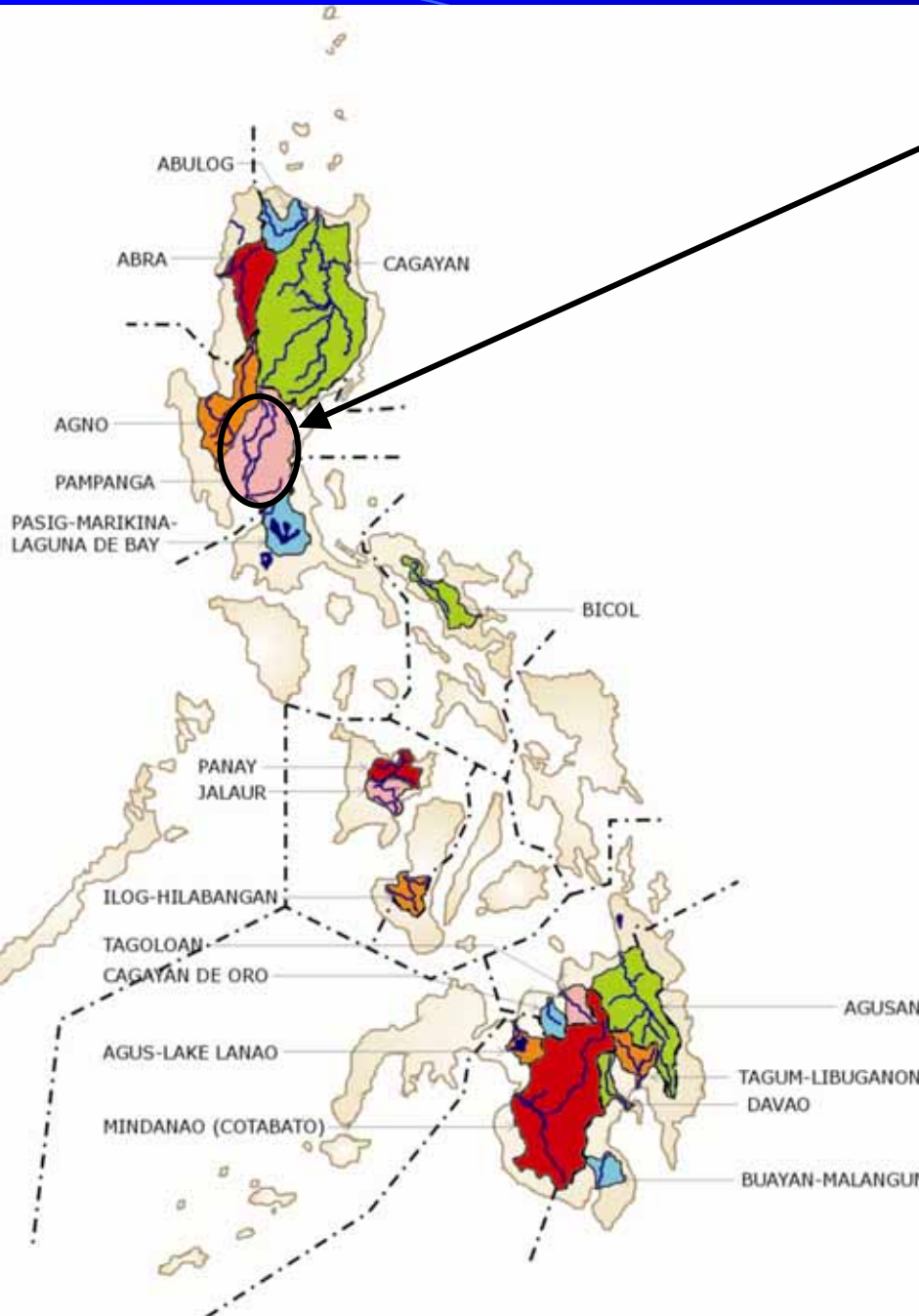
Flaviana Hilario

Weather Services Chief, Climatology and Agrometeorology Branch

PAGASA/DOST



Pampanga River Basin

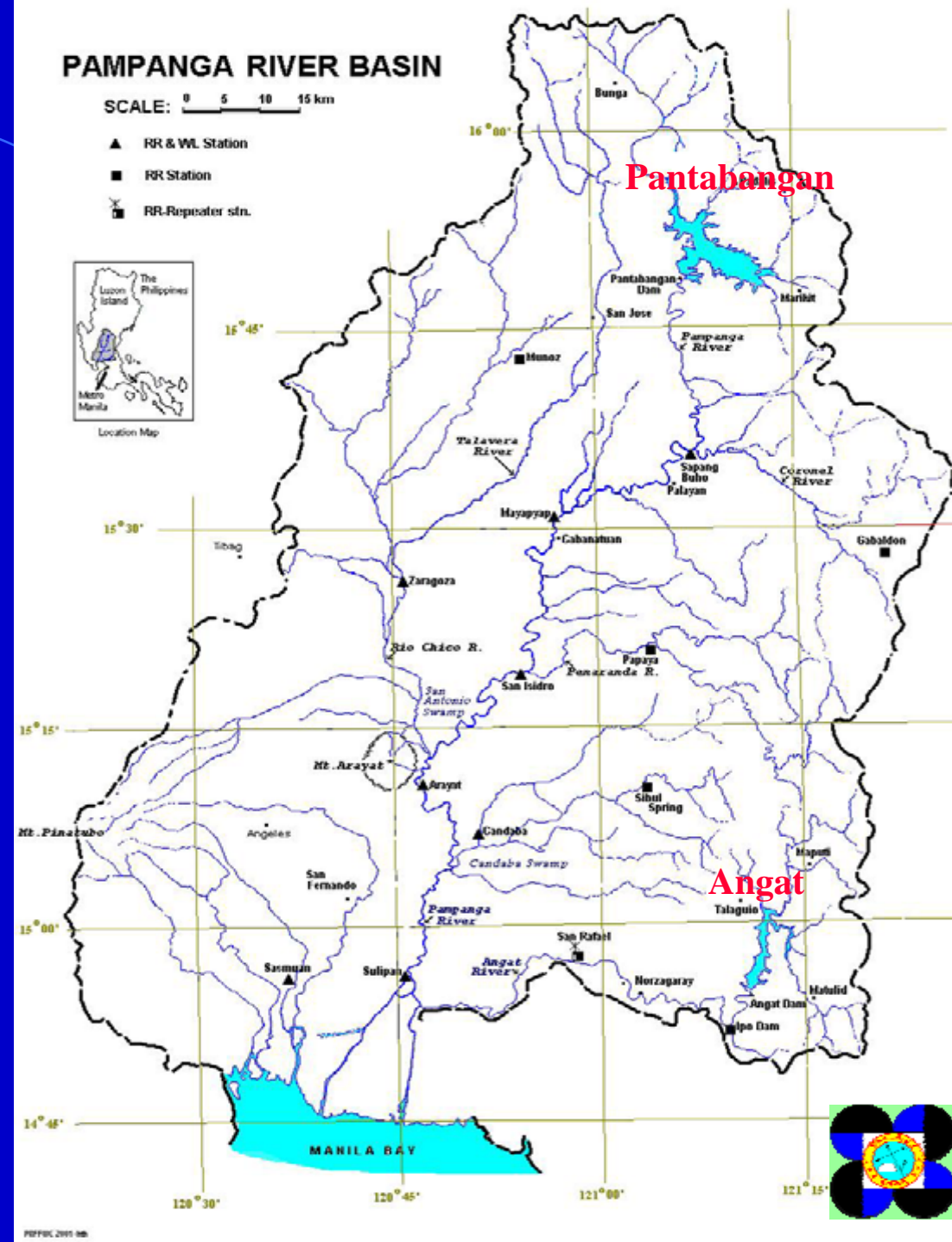


- Fourth largest basin in the Phil.
- Covers an approximate aggregate area of 10,540 sq.km
- The basin experiences, on an average, at least one flooding in a year.
- It is also affected by El Nino resulting in rainfall deficiency.



- There are two dams within the basin: Angat and Pantabangan dams.

- Both dams have multi-purpose uses: irrigation, power generation, domestic and industrial water supply



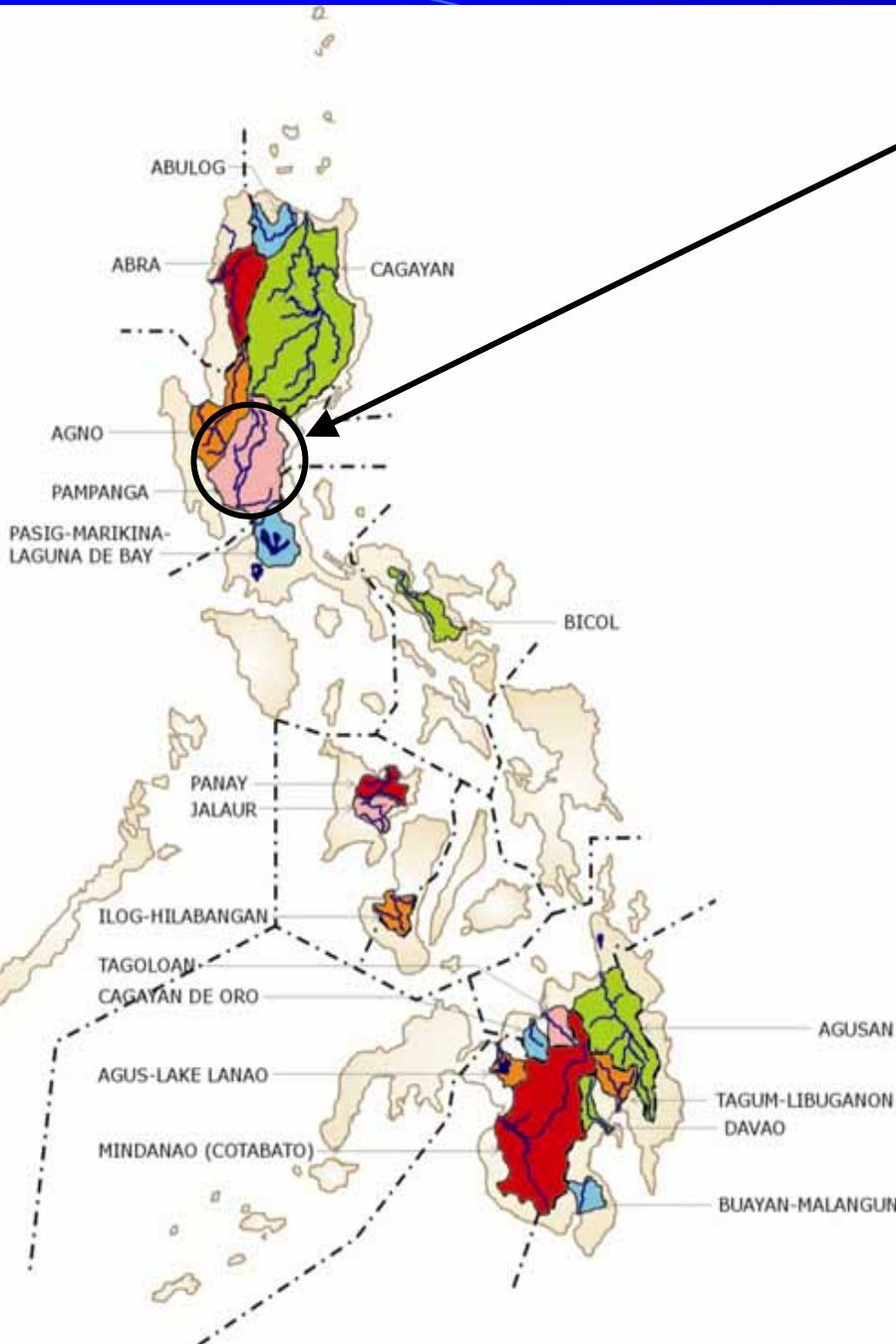
Pampanga River Basin

MAJOR ISSUES AND NEEDS RELATED TO THE WATER CYCLE AND WATER RESOURCES MANAGEMENT

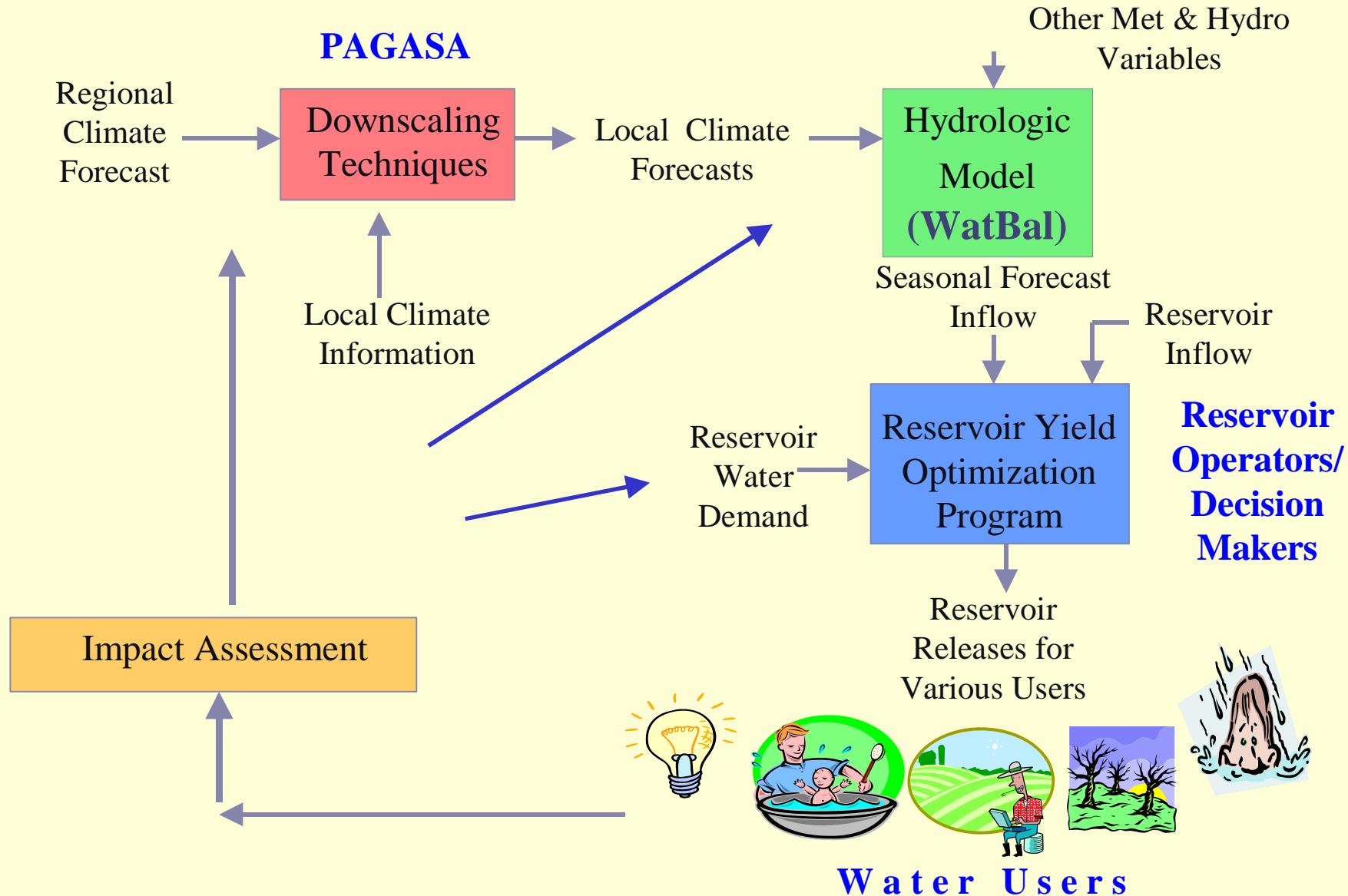
a) Development of a more accurate short and long-term weather/climate forecast model

b) Streamflow forecast model for the basin/watershed

c) Decision support system for the management of the water resource of the basin/watershed



An End-to-End Approach in Water Resources Management of a Multi-Purpose Reservoir





Capacity Needs:

- Training on use radar and satellite images in rainfall estimation and forecasting.
- Access to output of GCMs (needed as input to regional climate models)
- Integration of in-situ and satellite data in flood and drought monitoring.
- Flood hazard mapping
- Climate change scenario building



Thank You!

“tracking the sky . . . helping the country”