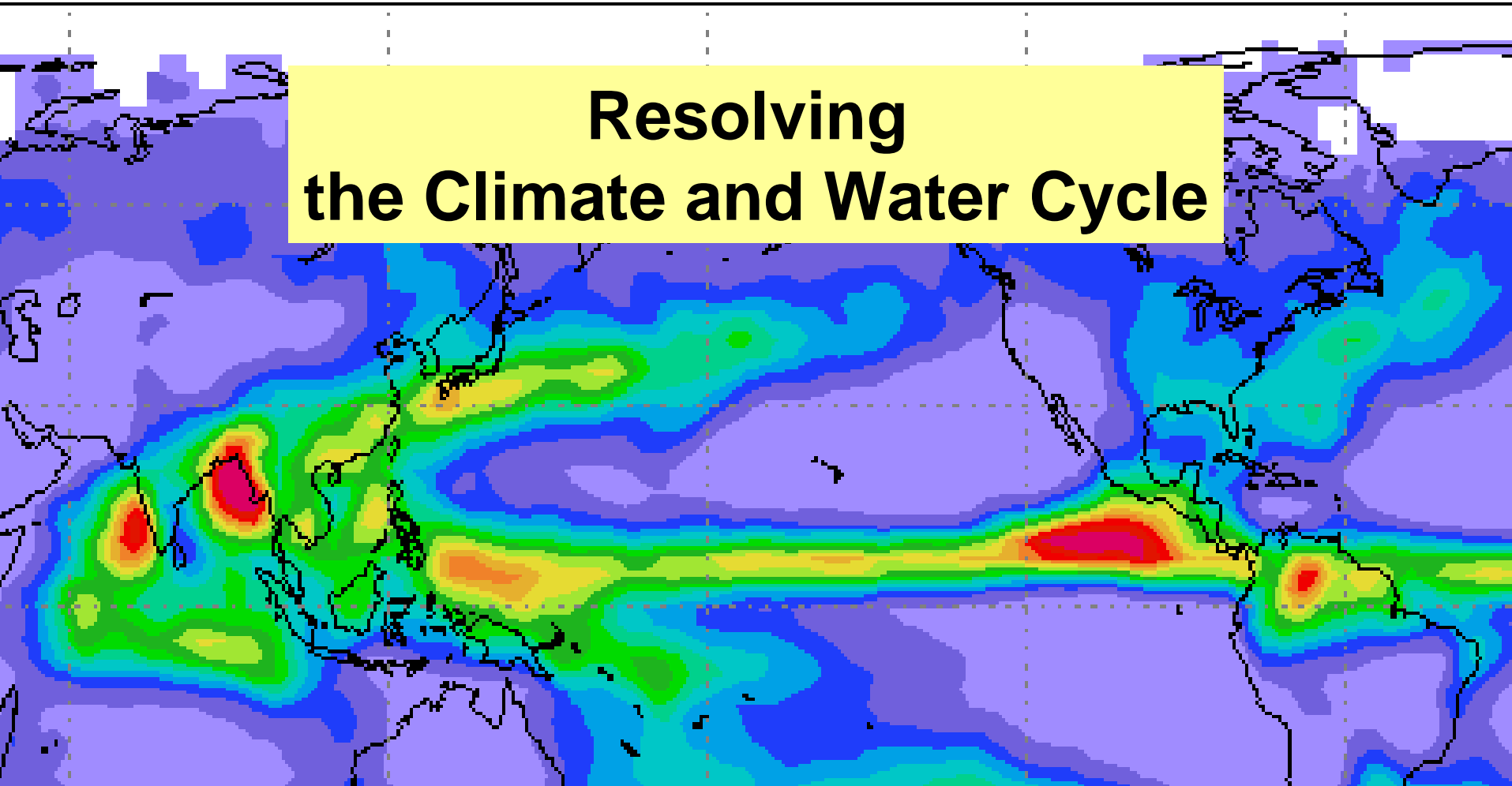


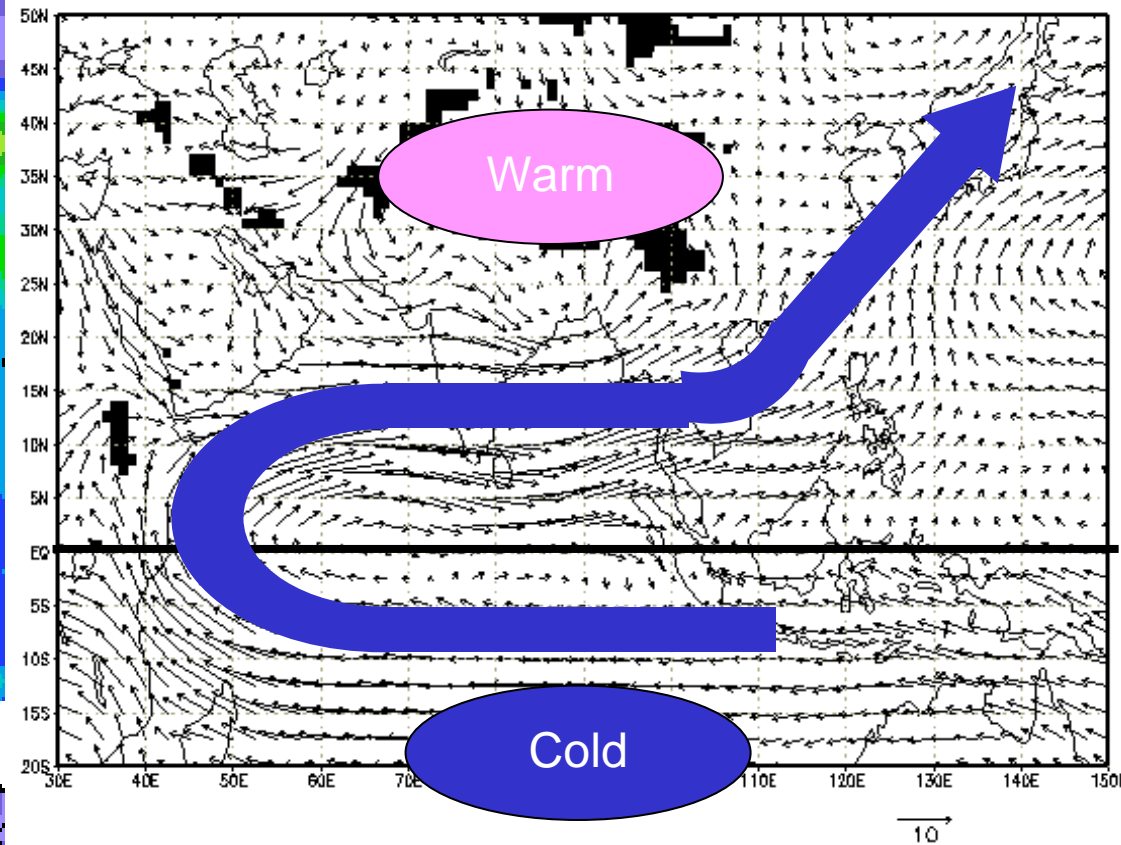
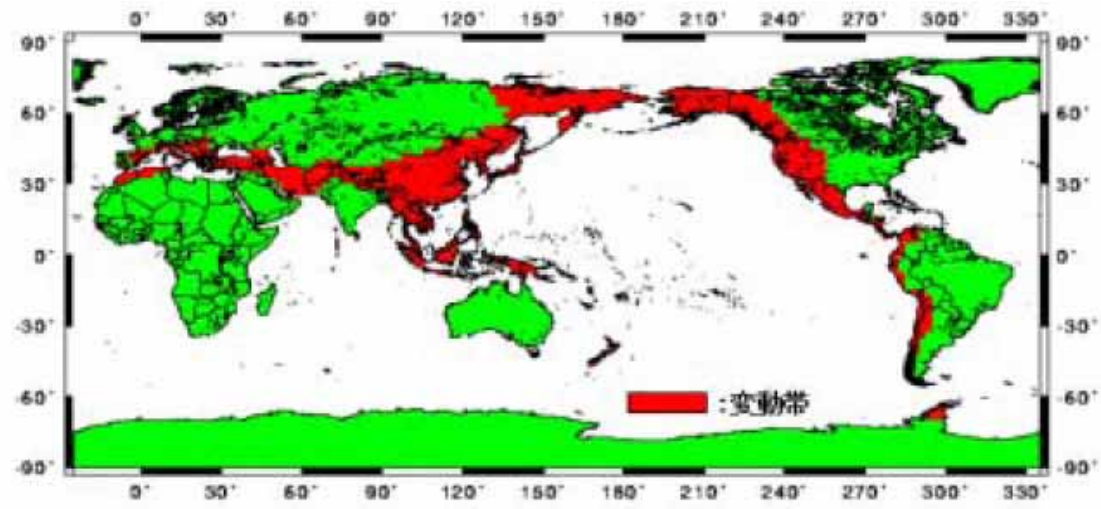
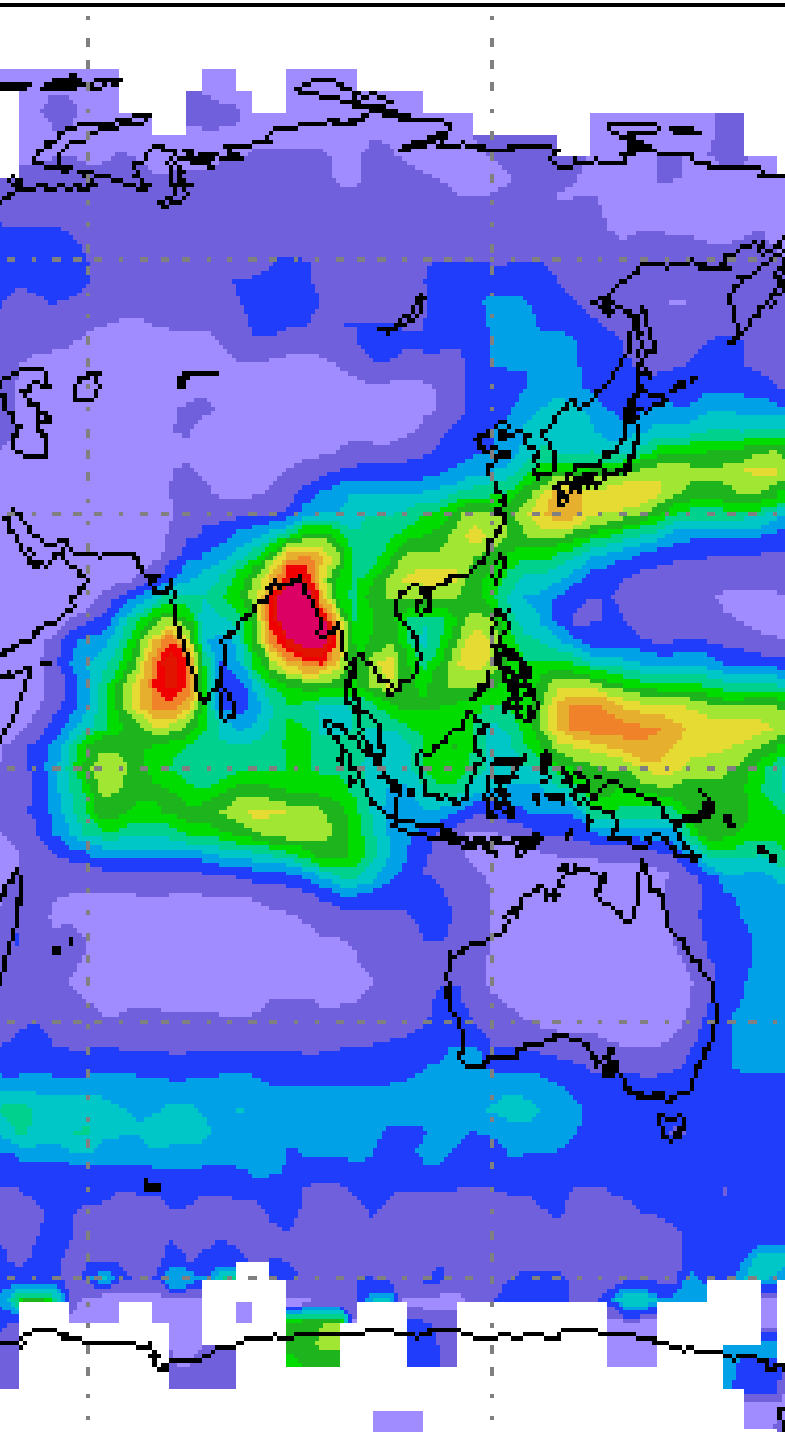
Resolving the Climate and Water Cycle



Toshio Koike

Earth Observation Data Integration and Fusion
Research Initiative (EDITORIA), The University of Tokyo

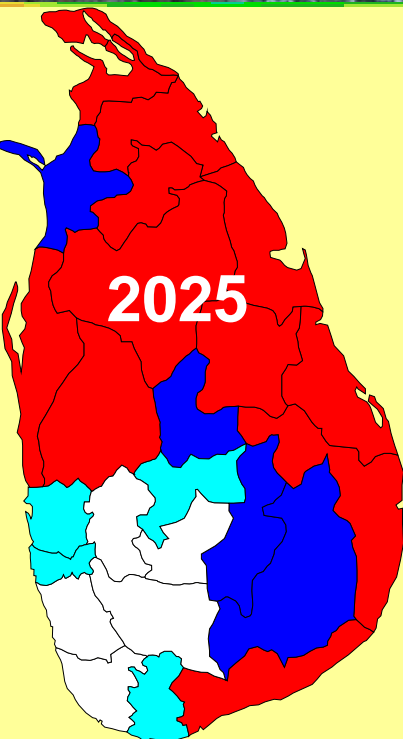
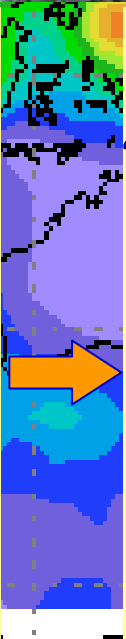
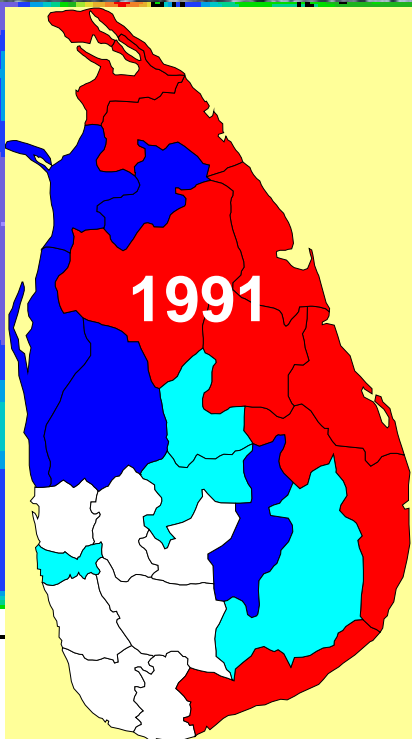
GEOSS Symposium on Integrated Observation for Sustainable Development
In the Asia-Pacific Region
January 11-12, 2007, Tokyo

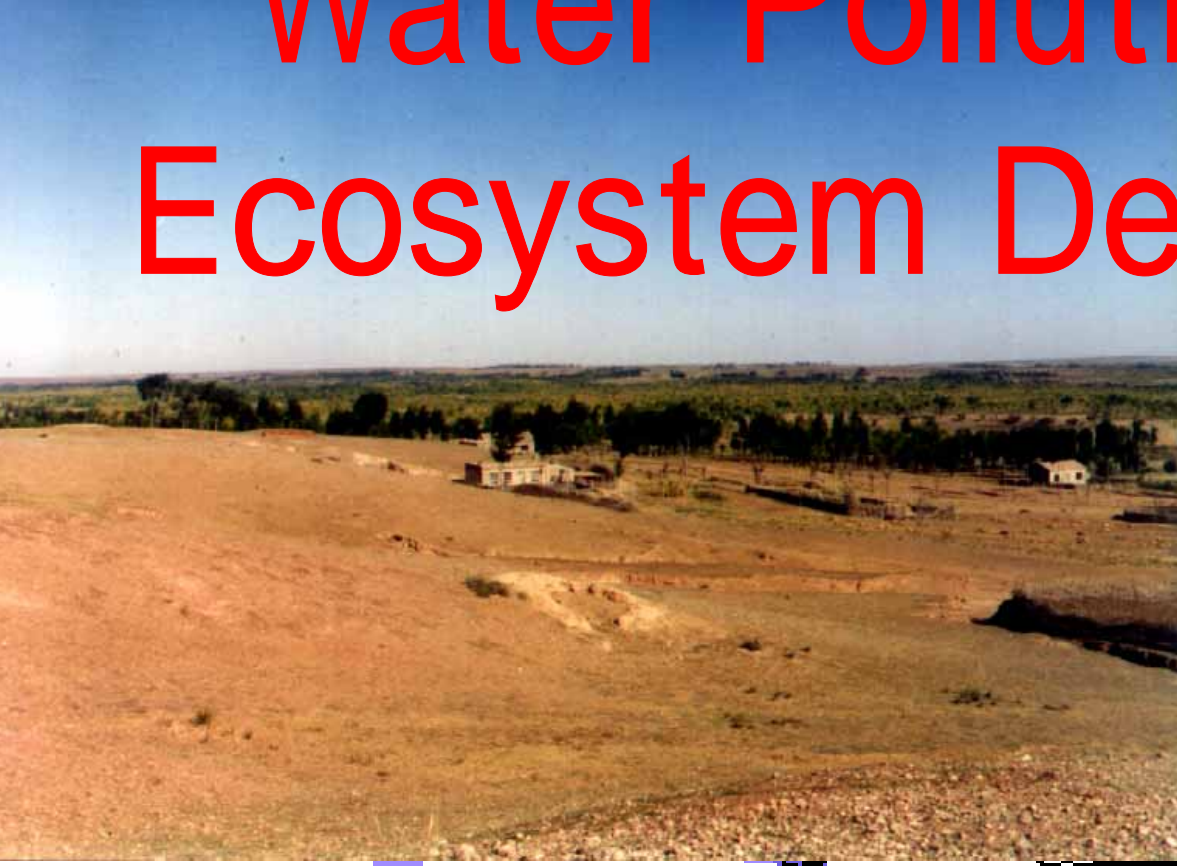
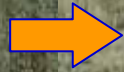




Floods

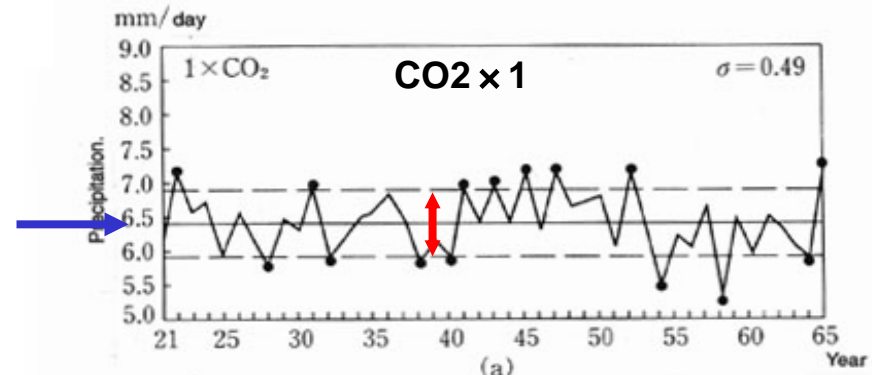
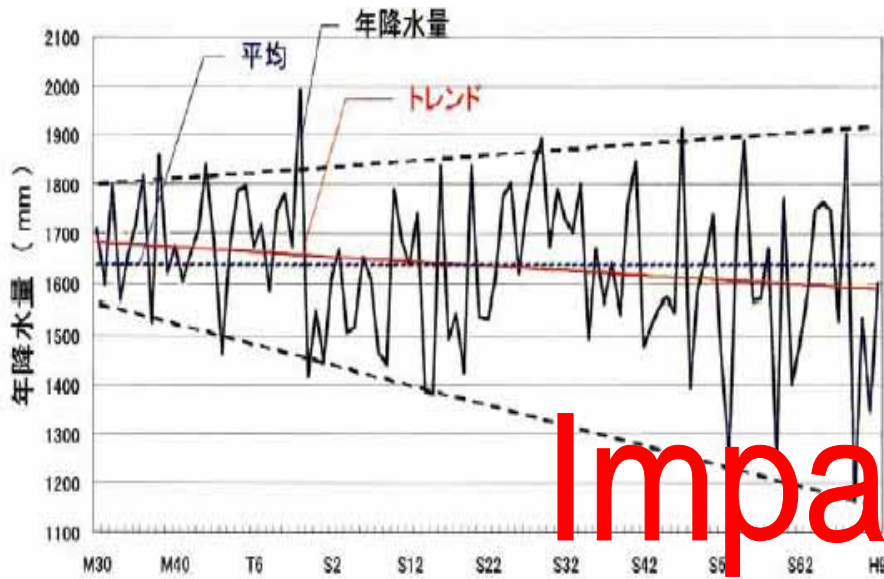
Drought and Water Scarcity



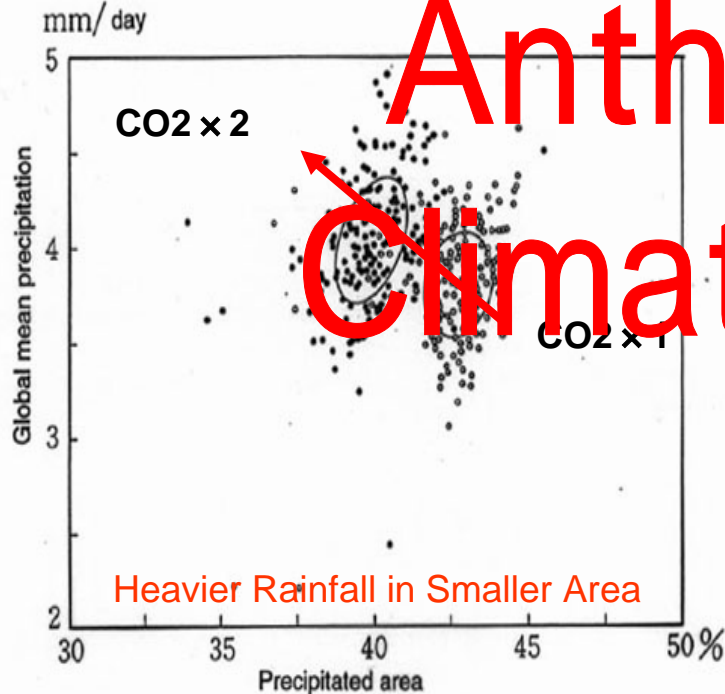
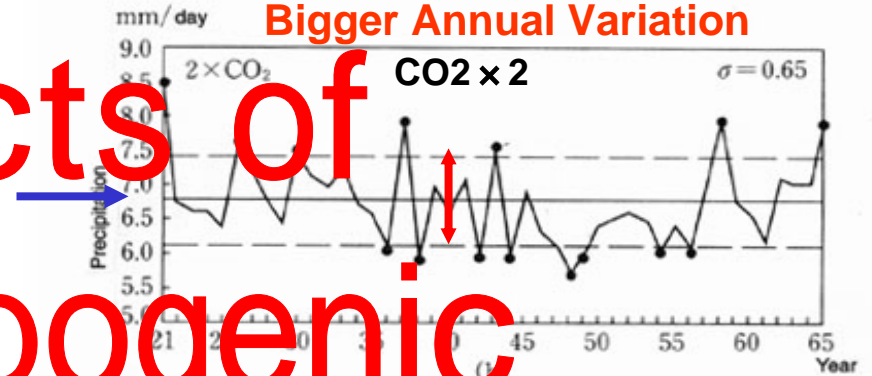


Water Pollution and Ecosystem Degradation

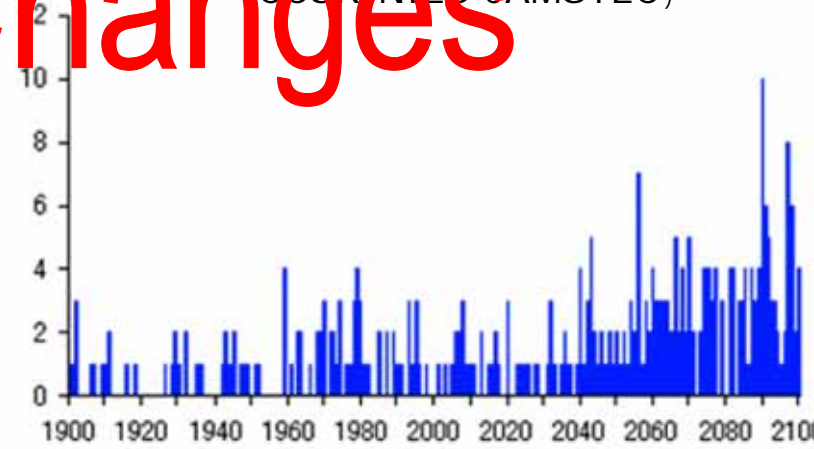
Annual Rainfall Variability in Japan



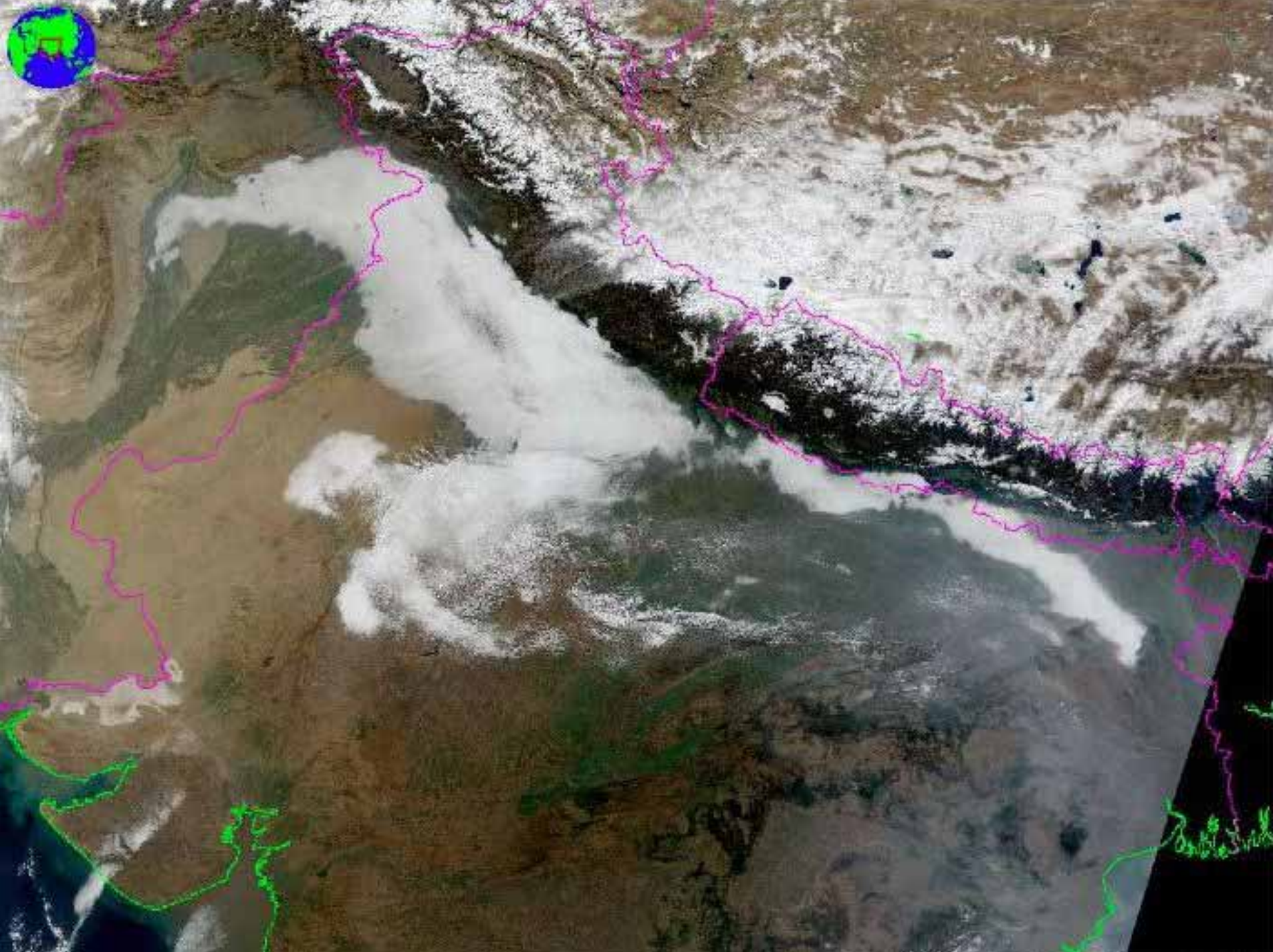
Indian Summer Rainfall Bigger Annual Variation



Heavy Rainfall Events Associated with Global Warming (CCSR INM2.3 - JAMSTEC)



Impacts of
Anthropogenic
Climate Changes



The 1st Asian Water Cycle Symposium

*The University of Tokyo, Tokyo
Japan, 2-4 November 2005*



GEO Secretary
UNESCO
UNEP
WMO
IGOS
Mekong Committee

Bangladesh
China
Indonesia
India
Japan
Korea
Laos

Malaysia
Mongolia
Pakistan
Philippine
Sri Lanka
Thailand
Vietnam

The Asian Water Cycle Initiative (AWCI) International Task Team (ITT) Working Session

September 2006



Bangladesh 3
Cambodia 1
Indonesia 1
Japan 2

Lao PDR 1
Myanmar 1
Nepal 1
Pakistan 1

Philippines 1
Sri Lanka 2
Uzbekistan 1
Vietnam 2

Rama Gardens Hotel, Bangkok, Thailand
September 26, 2006

International Workshop on Capacity Building in Asia "Earth Observations in the service of Water Management"

September 26-28, 2006, Bangkok

Co-hosted by GEO, IGWCO, JAXA, Univ. of Tokyo, AIT, UNU, WMO, WCRP, UNESCAP, ICHARM



The 2nd Asian Water Cycle Symposium

The University of Tokyo, Tokyo

November 9-10, 2007



29 Countries and 176 participant

GEOSS Asian Water Cycle Initiative (AWCI)

[integration and use of earth observation data] + [capacity building] programme

Integration and use of earth observation data

Satellite data, global network data, numerical forecasting model, assimilation of data

Area data / information

In-situ data

In-situ data

In-situ data

In-situ data

Capacity Building

use of satellite data

* Space Agencies

Research obs, Modeling and analysis

* UNU, universities Research Institute, etc.

In-situ observation River management

* ICHARM, MRC ESCAP, etc.

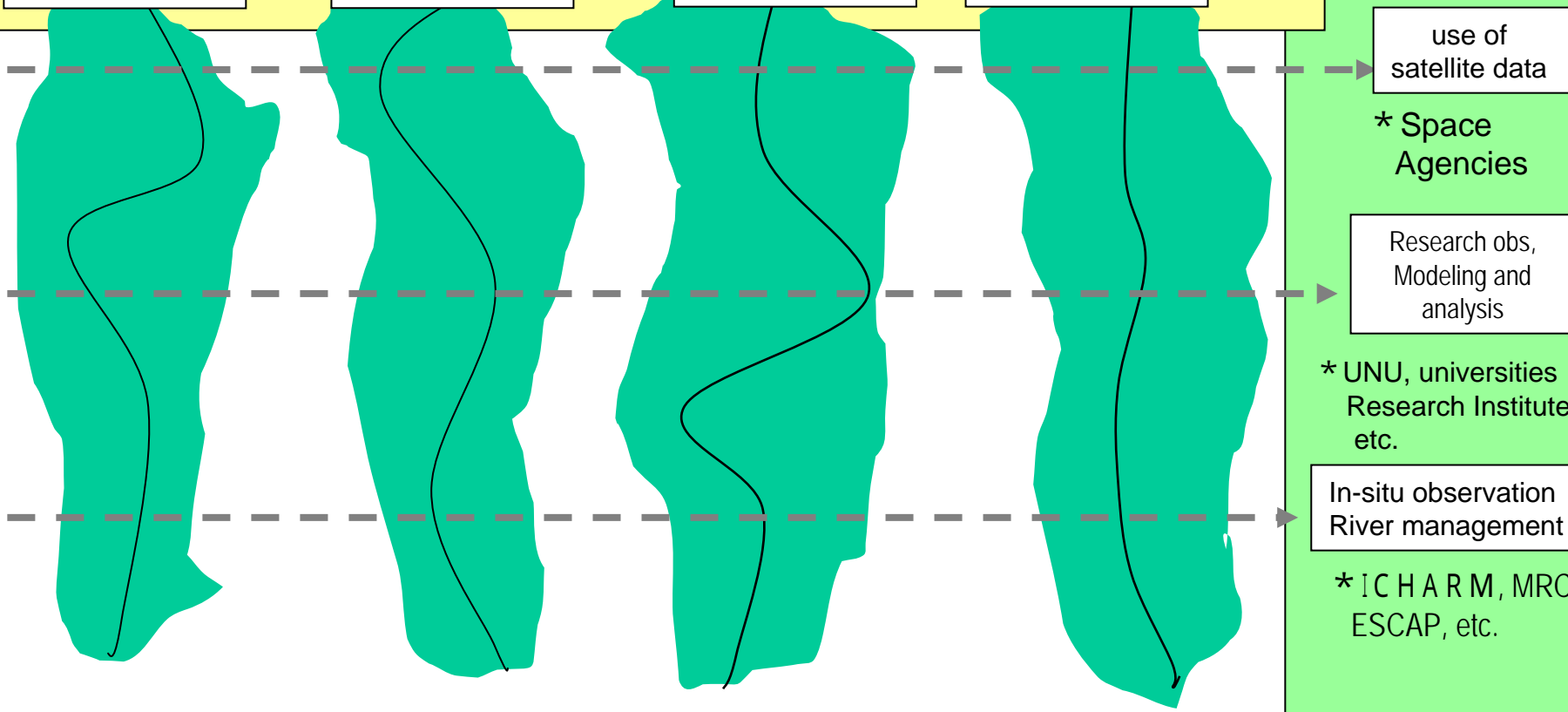
Common items

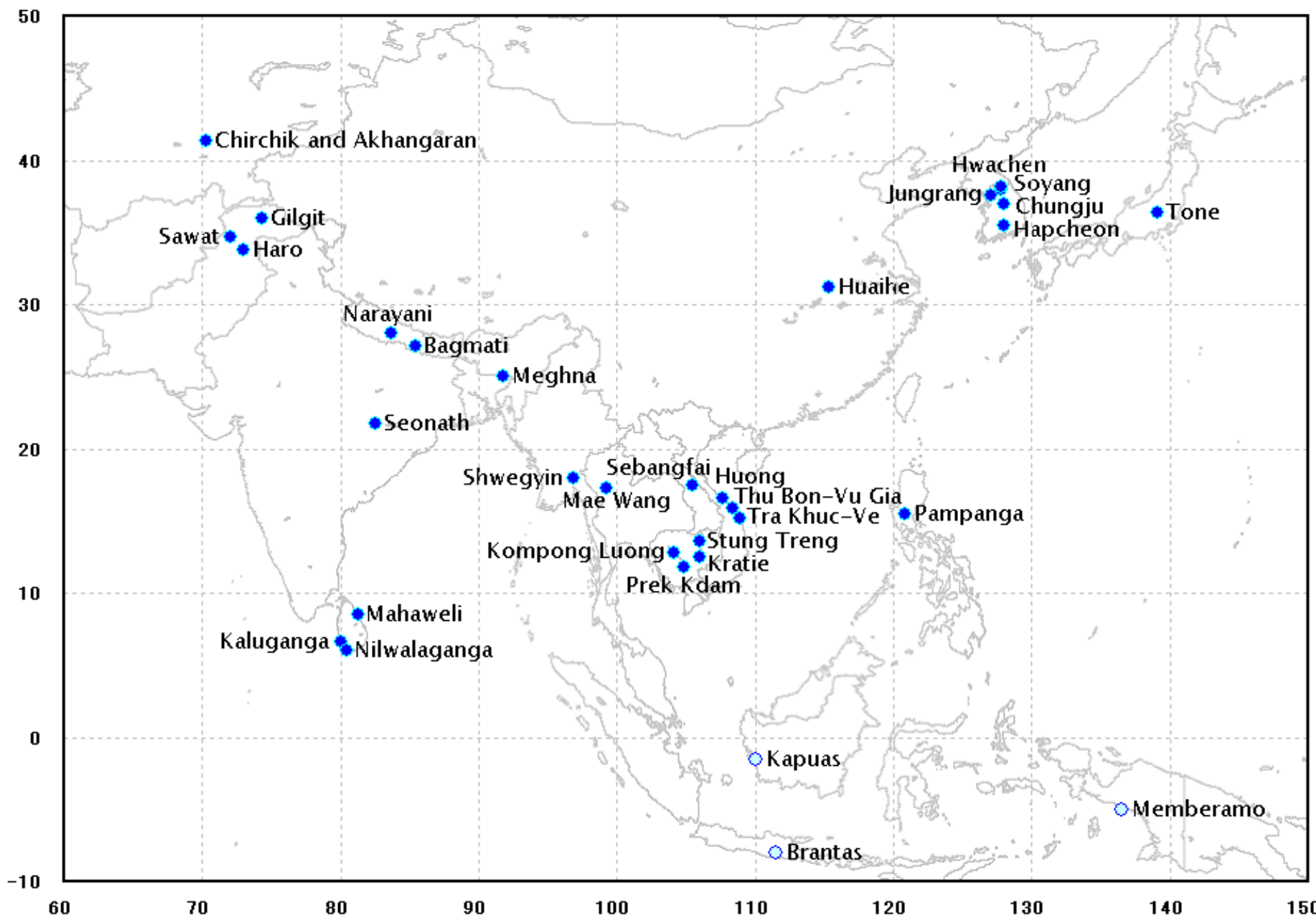
Basin 1

Basin 2

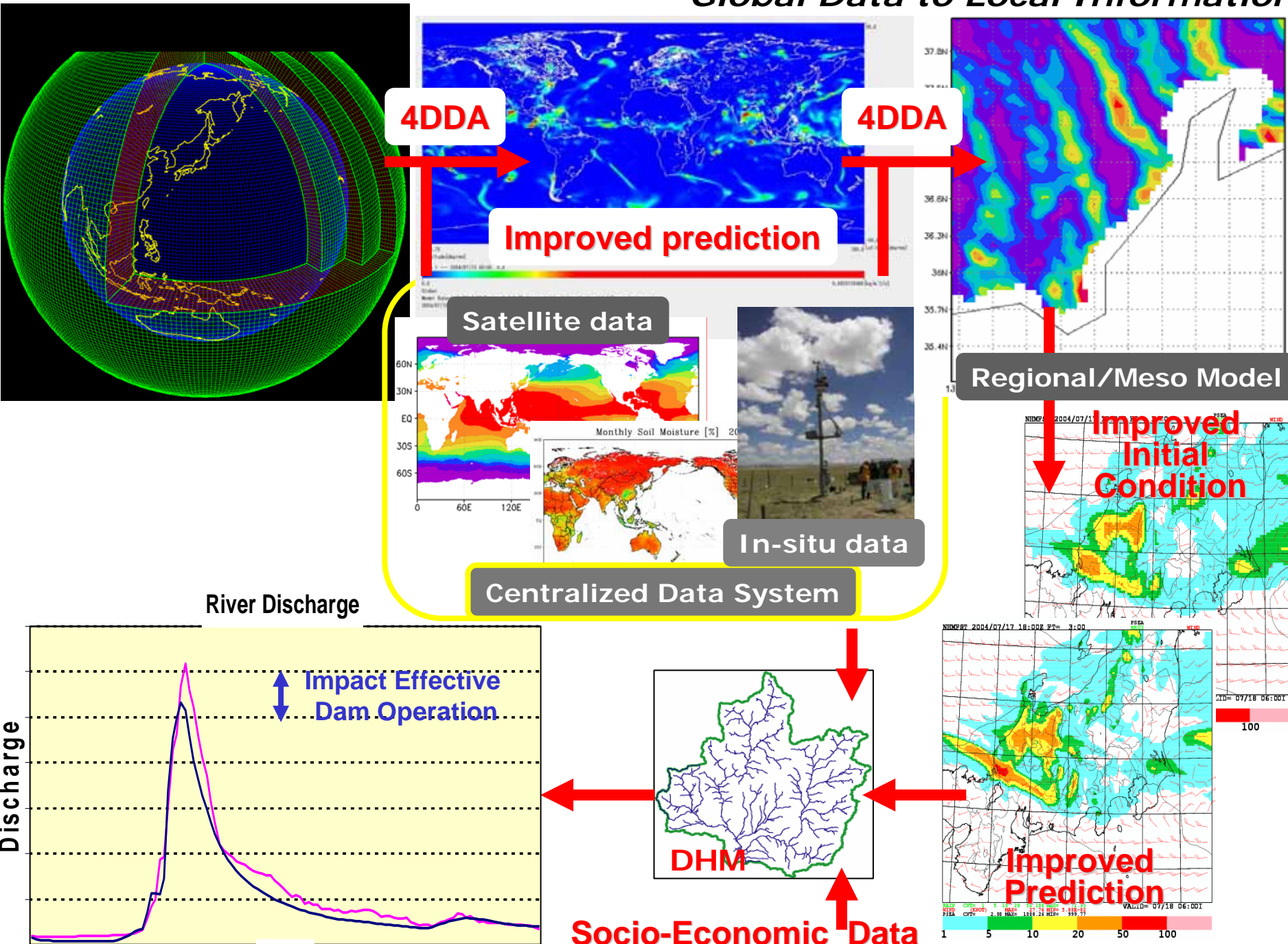
Basin 3

Basin 4





Global Data to Local Information



GEOSS Asian Water Cycle Initiative (AWCI)

[integration and use of earth observation data] + [capacity building] programme

Integration and use of earth observation data

Satellite data, global network data, numerical forecasting model, assimilation of data

Area data / information

In-situ data

In-situ data

In-situ data

In-situ data

Capacity Building

use of satellite data

* Space Agencies

Research obs, Modeling and analysis

* UNU, universities Research Institute, etc.

In-situ observation River management

* ICHARM, MRC ESCAP, etc.

Common items

Basin 1

Basin 2

Basin 3

Basin 4

